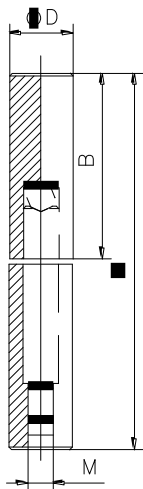



Панта Estebro® за заваряване кръгла регулируема M10, 25x150 мм, 614



Cod	Dimens.	A	B	ØD	M		
613	20x120	116	58	20	M.10	20	5,50
614	25x150	146	73	25	M.10	12	6,45
615	30x150	146	73	30	M.12	8	6,30

Family: Regulating hinge

Material: 11SMn30 steel

Description: Mechanized component which is installed on a metallic swing door to allow its opening and closing. It is specially designed to allow the height adjustment of the doors in which is installed. The regulating system consists of two screws: the inner one which rests on the lower base of the axle and allows its regulation from 0 to 12 mm; the outer one which rests on the inner screw working as a locknut to avoid its loosening.

Продукт: [Панта Estebro® за заваряване кръгла регулируема M10, 25x150 мм, 614](#)

Категория: [Панти за заваряване](#)

Бранд: [Estebro®](#)

Категория бранд: [Панта Estebro®](#)